

# **ANTIKA**

## **TECHNICAL DATA SHEET**

### **GENERAL DETAILS**

**ANTIKA** is a protective and decorative mineral based product that gives a pleasant old-looking aspect. The application of **ANTIKA** is easy, it is suggested for internal and external wall decoration, it reproduces the aesthetic effects like antique or naturally old plaster obtaining beautiful uneven color effects.

The final decorative effects are characterized by light and dark zone that, depending on the tools used and the substrate colour, are able to create different decorations in terms of hues and appearance. The mineral which gives the old-looking aspect has aesthetic effects which changes every times. For this reason it's possible to have differences between a batch and the other and chromatic variations on the final colorful product.

The product is water based, odourless, with low VOC content. It is characterized by high washability, high wet scrub resistance, light and atmospheric agent resistance and high water-vapour permeability.

**ANTIKA** is available in two versions: a "BASE BIANCA" for light colors such as "pastel" and a "BASE MEDIA" one to get more intense colors. It is possible to obtain a large number of hues by addition of small amounts of concentrated pigment pastes. Due to the variability of the chromaticity of the contained natural mineral in **ANTIKA**, the tones of colour cards have to be considered pure indicative.

### **SUBSTRATE'S PREPARATION**

It is suggested to apply **ANTIKA** on wall with low water absorption. To reduce the absorption, previously apply a quartz based paint for exterior.

Old paints not perfectly anchored or interior paints, must be removed mechanically because they can not guarantee perfect adhesion.

Best applied at: temperature T=15-30°C and relative humidity less then 70%. Do not apply in adverse weather conditions and, if outdoors, windy days and / or walls fully exposed to the sun. Protect from rain for at least 24-36 hours.

The product can also be applied on different substate after treatment with an appropriate insulation primer.

## APPLICATION

The product is ready to use. If necessary, diluted with small amount of water.



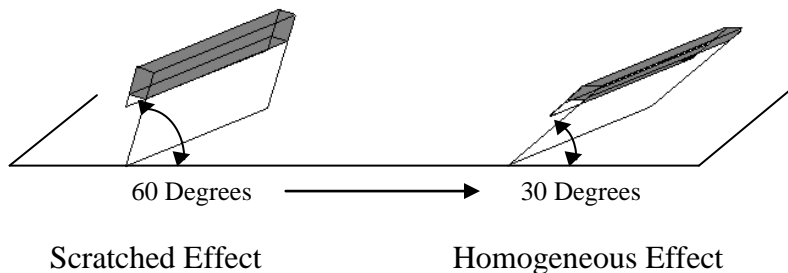
Add to ANTIKA concentrated waterborne pigment dispersions, maximum concentration 3-4%.



Apply a coat by brush with irregular movements in order to create the desired uneven.



A few minutes later, use the plastic spatula crushing and dragging lightly the product just to create the desired final effects.



Changing the spatula inclination, like it is represented in the picture, it is possible to modify the final effect, from scratched effect to a more homogeneous one.

**Tools:** brush and plastic spatula.

**Dilution:** maximum 5% with water

**Spreading rate:** 0,250 – 0,350 Kg/m<sup>2</sup>

**Drying time T=23±2°C; RH=50±5%:** touch dry in about 2-3 hours; completely dry in 18-24 hours.

**Specific weight:** 1,10±0,05 g/ml

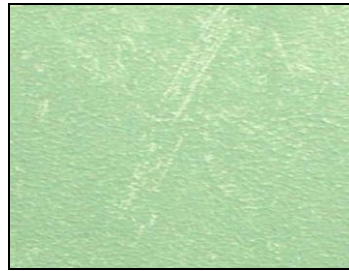
**Viscosity Brookfield:** 15000±5000 cps

All tools should be cleaned with water immediately after use.

The product is overpaintable with traditionally wall paints.

## FINAL EFFECT

In the following pictures are represented possible decorative effects created by different pressure and slope of plastic spatula during the smoothing step.



Scratched Effect



Homogeneous Effect

### TECHNICAL INFORMATION

Rating of degree of chalking (UNI EN ISO 4628-6:2003)	Degree of chalking = 0 after 300 hours of QUV
Wet scrub resistance (UNI 10560:1996)	None abrasion trace after 5000 cycling
Determination of water-vapour transmission rate (UNI EN ISO 7783-2:2001)	$S_d = 0,009$ m (thickness = 379 $\mu$ m) $\mu = 25$ High water-vapour permeability (Class V1)
Water absorption (UNI EN 1062-3:2001)	$W_{24} = 0.340$ Kg/m <sup>2</sup> t <sup>1/2</sup> Medium permeability (Class W2)

The tests are performed on samples dried up for 7 days at  $T = 23 \pm 2^\circ\text{C}$ ;  $RH = 50 \pm 5\%$

In order to improve water resistance of the product, especially for outdoor applications, it is suggested to add 2-5% of a specific hydrophobic additive: **ANTIKA ADDITIVO IDROFUGANTE**.

<b>ANTIKA</b> with 5% of hydrophobic additive Water absorption (UNI EN 1062-3:2001)	$W_{24} = 0.121$ Kg/m <sup>2</sup> t <sup>1/2</sup> Medium permeability (Class W2)
--	---

### HANDLING – STABILITY

**Storage:** store at temperature from 5 to 30° C.

**ANTIKA** does not have problems of stability when kept in a dry place, at room temperature and in the original sealed containers. PROTECT FROM FROST. The maximum period of storage is 12 months.

For hazardous information consult the MSDS.

Liability warning:

The advice and indications in these technical notes are based on our experience, but we cannot accept liability for them. Our technical service is at your disposition for any further details.